



For Engraving & Moldmaking



TM & © 1994 AMBLIN ENTERTAINMENT, INC.  
ALL RIGHTS RESERVED. J.P. 1994

TM.

# What Is ArtCAM?

ArtCAM is Delcam's proven software solution for the Engraving and Moldmaking industries. For more than 10 years our unique approach to 3D modeling for manufacture has transformed simple concept designs or sketches into the highest quality products for thousands of customers around the world. ArtCAM combines cutting-edge design and modeling capabilities with a fully-integrated range of powerful machining strategies.





👉 It is really amazing the detail our users can get with the sculpting functions and how easy is to complete, even this complex job, to the high quality we need. 🙌

Antonio Gallardo  
Artesanías Finas en Estaño  
Mexico

# Business Benefits

ArtCAM gives you the power to produce high quality, intricate designs for a variety of markets. From one-off pieces to full-scale production, ArtCAM allows you to reduce your delivery times whilst increasing your efficiency. Expand the range of products and services you can offer to your customers with ArtCAM.

Our innovative and award-winning manufacturing process gives you the fastest time from on-screen design to finished piece.

Fully integrated machining using world-leading toolpath strategies. Support for more than 200 CNC machine tools and routers.

Add complex decoration to your existing CAD designs and imported models.

Totally accurate simulation of the manufacturing process. Surface finish and toolpath efficiency can be guaranteed right from the outset.

Gain business from your competitors who don't have the technology and take on those projects that you could never have previously considered.

Cut your costs and increase your profits.







*“ One recent example of the delivery times now possible with ArtCAM was a special medal produced to commemorate Wales’ Grand Slam in the Six Nations rugby championship. We produced designs and punches in two days, and that included the time needed to recover from the hangovers following the victory celebrations! ”*

Matt Bonaccorsi  
Chief Engraver, Royal Mint  
United Kingdom



# Design

Quickly create detailed designs from sketches, pictures or photographs. Import existing 3D models to edit, decorate or use as '3D clipart' to create something totally new. Extensive drawing and painting tools, together with ArtCAM's intuitive 3D shape creation, allow you complete creative freedom.



Start your design using ArtCAM's comprehensive support for scanned pictures, 3D objects, photographs, images from the Web or even re-use any element of a model you have created previously.



Add smooth or geometric shapes, complex weaves, textures and detail to your ArtCAM design. Personalize each piece with text, logos and symbols. Design with confidence.



Visualize your final product on screen. Use your own color schemes or choose from a wealth of customizable materials including wood, metal and acrylic finishes.



*“ ArtCAM lets us design, create, critique, and make perfect pieces in just hours. ”*

Todd Bailey

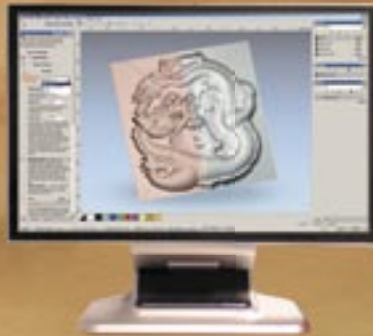
Chief Designer, Aitkens Pewter  
Canada

# Manufacture

Everything you design in ArtCAM is ready for manufacture. ArtCAM supports a number of manufacturing processes including CNC machining, laser cutting and rapid prototyping. Using Delcam's world-leading toolpath technology to produce reliable, fast and efficient toolpaths, ArtCAM will maximize the capabilities of your machine tool.



Select your tools from a comprehensive and customizable tool database or use toolpath templates to store and retrieve your frequently used tools and strategies.



Accurate toolpath simulation allows you to view the results of each toolpath on screen before you commit machining time and materials.



Up to date support for hundreds of machine tools - cut full 3D models using ArtCAM's multi-axis or indexed machining support.

# The Toolbox

## Design For Manufacture

You can turn artwork into detailed 3D models quicker than you ever thought possible with ArtCAM's powerful modeling tools.



## Embossing, Sculpting & Textures

ArtCAM gives you the power to design distinctive pieces with total freedom using our comprehensive, advanced feature set.



## Unrivalled Relief Modeling

Easily organize and change your 3D model using ArtCAM's unique 3D relief layer management system (patent pending).



## Text Editing & Font Creation

ArtCAM provides full control of size, spacing, layout and wrapping of text to curves and shapes. ArtCAM also comes with a fully-featured font creator for making your own specialist fonts or symbol libraries.



**Take your designs further than you ever thought possible...**

## Production Tools

ArtCAM provides industry-leading toolpath calculation speeds, automation, simulation and optimization. True-shape nesting of designs and toolpath panelling ensures minimal wasted time and material.



## Smart Engraving

Just stack up your tools and let ArtCAM automatically calculate the most efficient way to area-clear or pocket-machine your design.



## Toolpath Manipulation Tools

Toolpaths can be moved, rotated, merged or even projected onto a 3D surface without the needing to recalculate them.



## Import Major File Formats

Import model files and data from all major 3D modeling or 2D design programs. Cut them directly, engrave them, or use them to create novel designs.



*“ArtCAM support has always been first class and joining the ArtCAM Advantage program has been one of my best investments.”*

Larry Egelhoff  
President, BEECO Inc  
Indianapolis, USA



# Support & Training

Delcam's resellers worldwide are dedicated to supporting you. Your investment in ArtCAM will be rewarded with our commitment to support, training and future developments as we continue to expand the capabilities of your software.

## Support & Training

Our aim is to ensure that you can get the maximum return on your investment in our products as soon as possible. Delcam and its dedicated support and training network of over 350 offices worldwide ensure that your time is spent generating extra business and extra profit for your company.



## Online Resources

The ArtCAM User Forum is a free resource open to everyone. Currently home to over 6,000 registered users with 20,000 ArtCAM related topics. You can ask a question, download a tutorial, or just browse the showcase to see the latest designs from ArtCAM users.

<http://forum.artcam.com>



## ArtCAM Advantage

Maximize the benefit from your ArtCAM investment with the ArtCAM Advantage package. Included in the package is a wealth of online technical resources, discounts on other ArtCAM related services and an annual major software upgrade.

<http://advantage.artcam.com>



[www.artcam.com](http://www.artcam.com)

[www.delcam.com](http://www.delcam.com)



ArtCAM Express is designed specifically for the smaller business. ArtCAM Express is easy to use, quick to learn, and powered by ArtCAM's award-winning design & manufacturing engine.

ArtCAM Insignia combines the simplicity of ArtCAM Express with more sophisticated design and manufacturing tools. It focuses on optimization, productivity & automation, saving time, materials and money.

ArtCAM Pro provides a total solution for professional design and manufacture. Uniquely flexible 3D modeling tools combined with an unrivalled range of manufacturing technologies in one fully-integrated package.

**With our seamless upgrade path, ArtCAM will grow naturally with your business.**

**Delcam**

Small Heath Business Park  
Small Heath  
Birmingham  
B10 0HJ  
UK

+44-121-766-5544

**Delcam**

3280 Electricity Drive  
Windsor  
Ontario  
N8W 5J1  
CANADA

+1-877-DELCAM1

[marketing@delcam.com](mailto:marketing@delcam.com)

**Delcam**

275 E. South Temple  
Suite 305  
Salt Lake City  
Utah 84111  
USA

+1-877-DELCAM1