



For Signmaking and Woodworking



What Is ArtCAM?

ArtCAM is Delcam's proven software solution for the Signmaking and Woodworking industries. For more than 10 years our unique approach to 3D modeling for manufacture has transformed simple concept designs or sketches into the highest quality products for thousands of customers around the world. ArtCAM combines cutting-edge design and modeling capabilities with a fully-integrated range of powerful machining strategies.





“ArtCAM is incredibly capable and easy to use. It provides the tools and flexibility I need to produce extremely detailed work in a timely manner. There’s nothing better on the market.”

Joe Valasek - Heartwood Carving, Oregon

Business Benefits

ArtCAM gives you the power to produce high quality, intricate designs for a variety of markets. From one-off pieces to full-scale production, ArtCAM allows you to reduce your delivery times while increasing your efficiency. Expand the range of products and services you can offer to your customers with ArtCAM.

Our Innovative and award-winning manufacturing process gives you the fastest time from on-screen design to finished piece.

Fully integrated machining and simulation of the manufacturing process with support for rapid-prototype machines and over 200 CNC machine tools and routers.

Minimize waste material and maximize efficiency through automated true-shape nesting and toolpath ordering options.

Gain business from your competitors who don't have the technology and take on those projects that you could never have previously considered.

Cut your costs and increase your profit.









“ Purchasing ArtCAM has allowed us to work with greater creativity, as we know any design we create can be quickly modeled and manufactured. ”

Wesley McCreary - Sunset Signs, Ireland

Design

Quickly create detailed designs from sketches, pictures or photographs. Import existing 3D models to edit, decorate or use as '3D clipart' to create something totally new. Extensive drawing and painting tools, together with ArtCAM's intuitive 3D shape creation, allow you complete creative freedom.



Start your design using ArtCAM's comprehensive support for scanned pictures, 3D objects, photographs, images from the Web or even re-use any element of a model you have previously created.



Add smooth or geometric shapes, complex weaves, textures and detail to your ArtCAM design. Personalize each piece with text, logos and symbols. Design with confidence.



Visualize your final product on screen. Use your own color schemes or choose from a wealth of customizable materials including wood, metal and acrylic finishes.

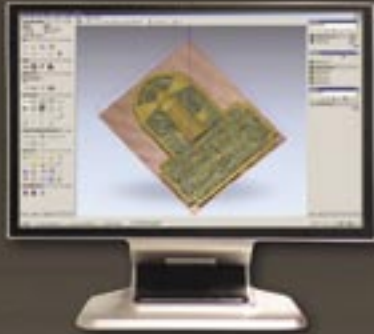


“As a manufacturer I need total control over my toolpaths. ArtCAM’s toolpaths run accurately and consistently every time.”

Mike Sheehan - Classic Design & Manufacturing, Pensacola, Florida

Manufacture

Everything you design in ArtCAM is ready for manufacture. ArtCAM supports a number of manufacturing processes including CNC machining, laser cutting and rapid prototyping. Using Delcam's world-leading toolpath technology to produce reliable, fast and efficient toolpaths, ArtCAM will maximize the capabilities of your machine tool.



Select your tools from a comprehensive and customizable tool database or use toolpath templates to store and retrieve your frequently used tools and strategies.



Accurate toolpath simulation allows you to view the results of each toolpath on screen, before you commit machining time and materials.



Up to date support for hundreds of machine tools - cut full 3D models using ArtCAM's multi-axis or indexed machining support.

The Toolbox

Design For Manufacture

You can turn artwork into detailed 3D models quicker than you ever thought possible with ArtCAM's powerful modeling tools.



Unrivalled Relief Modeling

Easily organize and change your 3D model using ArtCAM's unique 3D Relief layer management system (patent pending).



Embossing, Sculpting & Textures

ArtCAM gives you the power to design distinctive pieces in total freedom with our comprehensive, feature set.



3D Realistic Rendering

Show your customer the final piece before manufacture by producing stunning visuals for promotional materials.



Take your designs further than you ever thought possible...

Production Tools

True-shape nesting of designs allow you to minimize waste material. While toolpath paneling, profiling and bridging ensure maximum production flexibility.



Automated Manufacturing

ArtCAM's toolpath templates and Wizards help you manufacture your designs in minutes or hours, not days.



Relief & Vector Library

ArtCAM's expandable vector and relief libraries allow you to add your own frequently used shapes, symbols, logos and previously created designs or components.



Import Major File Formats

Import model files and data from all major 3D modeling or 2D design programs. Cut them directly, or use them to create novel designs.



“ArtCAM support has always been first class and joining the ArtCAM Advantage program has been one of my best investments.”

Larry Egelhoff - President, BEECO Inc.
Indianapolis, USA



Support & Training

Delcam's resellers worldwide are dedicated to supporting you. Your investment in ArtCAM is rewarded with our commitment to support, training and future developments as we continue to expand the capabilities of your software.

Support & Training

Our aim is to ensure that you can get the maximum return on your investment in our products as soon as possible. Delcam and its dedicated support and training network of over 350 offices worldwide, ensure that your time is spent generating extra business and extra profit for your company.



Online Resources

The ArtCAM User Forum is a free resource open to everyone. Currently home to over 6,000 registered users with 20,000 ArtCAM related topics. You can ask a question, download a tutorial, or just browse the showcase to see the latest designs from ArtCAM users.

<http://forum.artcam.com>



ArtCAM Advantage

Maximize the benefit from your ArtCAM investment with the ArtCAM Advantage package. Included in the package are a wealth of online technical resources, discounts on other ArtCAM related services and an annual major software upgrade.

<http://advantage.artcam.com>



www.artcam.com

www.delcam.com



ArtCAM Express is designed specifically for the smaller business. ArtCAM Express is easy to use, quick to learn, and powered by ArtCAM's award-winning design & manufacturing engine.

ArtCAM Insignia combines the simplicity of ArtCAM Express with more sophisticated design and manufacturing tools. It focuses on optimization, productivity & automation, saving time, materials and money.

ArtCAM Pro provides a total solution for professional design and manufacture. Uniquely flexible 3D modeling tools, combined with an unrivalled range of manufacturing technologies in one fully-integrated package.

With our seamless upgrade path, ArtCAM will grow naturally with your business.

Delcam
Small Heath Business Park
Small Heath
Birmingham
B10 0HJ
UK

Delcam
3280 Electricity Drive
Windsor
Ontario
N8W 5J1
CANADA

Delcam
275 E. South Temple
Suite 305
Salt Lake City
Utah 84111
USA

marketing@delcam.com

© Copyright Delcam plc 2007. All other trademarks the property of their respective owners.